

Education

Education is the process of facilitating learning or the acquisition of knowledge, skills, values, beliefs, and habits. It is commonly divided into such stages as preschool or kindergarten, elementary school, secondary school, and college, university, or apprenticeship. It leads to the development of a person in terms of his/her self-growth and economic growth as it is one of the principal factors that determine the path, he/she will take.

Preparatory, Elementary and Secondary

Schools (by level, type, facilities and condition)

The existing educational facilities in General Trias caters to various levels including pre-school, elementary, secondary school (junior and senior high school), and tertiary level. While, there also schools offering vocational courses. Adequate land area and facilities are needed in every educational institution to ensure that students have a conducive learning environment. The list of public and private elementary and secondary schools with their respective facilities is shown in Table 1.

Laboratories are needed to broaden the technical knowledge and practical skills of students in the field of Science. However, not all public elementary schools have their own laboratories such as the following:

- | | |
|---|--|
| 1. Angel L. Bawalan Elementary School | 9. Manggahan Elementary School |
| 2. Bacao Elementary School | 10. Mary Cris Elementary School |
| 3. Belvedere Elementary School | 11. Panungyanan Elementary School |
| 4. Caritas Bukid Kabataan Elementary School | 12. Parklane Elementary School |
| 5. General Gregorio S. Alona Sr. Memorial Elementary School | 13. Pasong Kawayan II West Elementary School |
| 6. Ipilan Barrio School | 14. San Francisco Elementary School |
| 7. Juliano C. Brosas Elementary School | 15. Santiago Elementary School |
| 8. Luis Ferrer III Memorial Elementary School | 16. Sunny Brooke Elementary School |
| | 17. Tejero Elementary School |
| | 18. Tropical Village Elementary School |

And only the Luis Ferrer Jr. North National High School, for public secondary schools, lacks its own laboratory. Furthermore, not all public schools have their own home economics room. Included in these are the following public elementary school:

- | | |
|---|--|
| 1. Angel L. Bawalan Elementary School | 8. Mary Cris Elementary School |
| 2. Belvedere Elementary School | 9. Panungyanan Elementary School |
| 3. Buenavista Elementary School | 10. Parklane Elementary School |
| 4. Ipilan Barrio Elementary School | 11. Pasong Kawayan II West Elementary School |
| 5. Juliano C. Brosas Elementary School | 12. San Francisco Elementary School |
| 6. Luis Ferrer III Memorial Elementary School | 13. Sunny Brooke Elementary School |
| 7. Manggahan Elementary School | 14. Tejero Elementary School |

Table 1. Inventory of Schools by Level, Type, Facilities, and Condition, 2018

Level/ Name of School	Barangay	Area Occupied (sq.m)	Ownership	Number of Facilities and Condition														Used as Evacuation Center (Y/N)	Hazard Susceptibility (H/M/L)			
				Laboratory		Shop		Library		Canteen		Playground		Comfort Room		Others/ HE			FI	GS	Ln	Lq
				No.	Condition	No.	Condition	No.	Condition	No.	Condition	No.	Condition	No.	Condition	No.	Condition					
ELEMENTARY LEVEL																						
Angel L. Bawalan Elementary School	Alingaro	5,000	Public	0	G	0	N	0	N	1	G	1	G	13	G	0	N	Y		H		
Bacao Elememtry School	Bacao I	7,957	Public	0	N	0	N	0	N	1	G	1	G	21	G	1	G	Y	M	H		M
Belvedere Elementary School	Pasong Kawayan II	4,509	Public	0	N	0	N	0	N	1	G	0	N	39	G	0	N	Y		H		
Buenavista Elementary School	Buenavista III	6,337	Public	1	G	0	N	0	N	1	G	0	N	22	G	0	N	Y		H		
Caritas Bukid Kabataan Elementary School	San Francisco	30,000	Public	0	N	0	N	0	N	0	N	1	G	4	G	1	G	Y		H	L	
Cecilio M. Saliba Elementary School	Pasong Camachile II	7,227	Public	1	G	1	G	1	G	1	G	0	N	27	G	1	G	Y		H	L	
Diego Mojica Memorial School	Sampalucan	3,988	Public	1	G	0	N	1	G	1	G	0	N	48	G	1	G	Y	L	H		L
Gen. Artemio Ricarte Memorial School	Bagumbayan	1,899	Public	1	G	1	G	0	N	1	G	0	N	26	G	1	G	Y	L	H		L
Gen. Trias Memorial Elementary School	San Juan I	27,528	Public	1	G	1	G	1	G	1	G	1	G	35	G	1	G	Y	L	H		L
General Gregorio S. Aloña Sr. Memorial Elementary School	Biclatan	10,000	Public	0	N	0	N	0	N	1	G	0	N	49	G	1	G	Y		H		
Ipilan Barrio School	Buenavista I	965	Public	0	N	0	N	0	N	1	G	0	N	11	G	0	N	Y		H		
Javalera Elementary School	Javalera	5,000	Public	1	G	0	N	0	N	1	G	2	G	28	G	1	G	Y		H		
Juliano C. Brosas Elementary School	Pasong Kawayan I	2,600	Public	0	N	0	N	0	N	1	G	1	G	21	G	0	N	Y		H		
Luis Ferrer Iii Memorial Elementary School	Pinagtipunan	895	Public	0	N	0	N	0	N	1	G	0	N	16	G	0	N	Y	L	H		L
Manggahan Elementary School	Manggahan	7,224	Public	0	N	0	N	0	N	1	G	1	G	16	G	0	N	Y		H		
Mary Cris Elementary School	Pasong Camachile II	4,300	Public	0	N	0	N	0	N	1	G	0	N	26	G	0	N	Y		H	L	
Navarro Elementary School	Navarro	5,000	Public	1	G	0	N	0	N	1	G	0	N	30	G	1	G	Y	L	H		L
Panungyanan Elementary School	Panungyanan	5,000	Public	0	N	0	N	0	N	1	G	1	G	6	G	0	N	Y		H		

Level/ Name of School	Barangay	Area Occupied (sq.m)	Ownership	Number of Facilities and Condition														Used as Evacuation Center (Y/N)	Hazard Susceptibility (H/M/L)			
				Laboratory		Shop		Library		Canteen		Playground		Comfort Room		Others/ HE			FI	GS	Ln	Lq
				No.	Condition	No.	Condition	No.	Condition	No.	Condition	No.	Condition	No.	Condition	No.	Condition					
Parklane Elementary School	Santiago	4,634	Public	0	N	0	N	0	N	1	G	0	N	26	G	0	N	Y		H		
Pasong Kawayan li Elementary School	Pasong Kawayan II	7,527	Public	1	G	0	N	1	G	1	G	1	G	23	G	1	G	Y		H		
Pasong Kawayan li West Elementary School	Pasong Kawayan II	1,804	Public	0	N	0	N	0	N	1	G	0	N	11	G	0	N	Y		H		
San Francisco Elementary School	San Francisco	3,000	Public	0	N	0	N	0	N	0	N	0	N	17	G	0	N	Y		H		
Santiago Elementary School	Santiago	5,000	Public	0	N	0	N	0	N	1	G	0	N		G	1	G	Y		H	L	
Sunny Brooke Elementary School	San Francisco	14,632	Public	0	N	1	G	1	G	1	G	1	G	77	G	0	N	Y		H		
Tapia Elementary School	Tapia	5,000	Public	1	G	0	N	1	G	1	G	2	G	9	G	1	G	Y	L	H		L
Tejero Elementary School	Tejero	3,988	Public	0	N	0	N	0	N	1	G	1	G	16	G	0	N	Y	L	H		M
Tropical Village Elementary School	San Francisco	9,842	Public	0	N	0	N	1	G	1	G	0	N	37	G	1	G	Y		H	L	
SECONDARY LEVEL																						
Gov. Ferrer Mem. Nat'l High School Biclatan Annex	Biclatan	5,000	Public	2	G	0	N	1	G	1	G	0	N	9	G	1	G	Y		H		
Andres A. Nocon National High School	Buenavista II	5,000	Public	1	G	0	N	1	G	1	G	0	N	2	G	1	G	Y		H		
Gov. Ferrer Mem. Nat'l High School Main Annex	Pinagtipunan	8,000	Public	3	G	0	N	1	G	1	G	1	G	86	G	1	G	Y	L	H		L
Luis Ferrer Jr East National High School	San Francisco	3,228	Public	4	G	0	N	1	G	1	G	0	N	6	G	1	G	Y		H	L	
Luis Ferrer Jr North National High School	Pasong Camachile II	2,046	Public	0	N	0	N	1	G	1	G	0	N	8	G	0	N	Y		H	L	
Luis Ferrer Jr Senior High School	Pasong Kawayan II	2,500	Public	3	G	1	G	1	G	1	G	1	G	20	G	0	N	N		H		
Luis Ferrer Jr West National High School	Pasong Kawayan II	1,001	Public	2	G	1	G	1	G	1	G	0	N	7	G	0	N	Y		H		
Santiago National High School	Santiago	5,000	Public	2	G	1	G	1	G	1	G	1	G	11	G	1	G	Y		H	L	
Tropical Village Nat'l High School	San Francisco	4,921	Public	2	G	4	G	1	G	1	G	0	N	10	G	1	G	Y		H	L	
ELEMENTARY & SECONDARY LEVEL																						

Level/ Name of School	Barangay	Area Occupied (sq.m)	Ownership	Number of Facilities and Condition														Used as Evacuation Center (Y/N)	Hazard Susceptibility (H/M/L)			
				Laboratory		Shop		Library		Canteen		Playground		Comfort Room		Others/ HE			FI	GS	Ln	Lq
				No.	Condition	No.	Condition	No.	Condition	No.	Condition	No.	Condition	No.	Condition	No.	Condition					
A1. W.M. Learning Academy, Inc.	Manggahan	2,715	Private	4	G	1	G	1	G	1	G	1	G	12	G	1	G	N		H		
Academy of Saint John La Salle Green Hills Supervised	Sta. Clara	30,000	Private	3	G	0	N	2	G	1	G	1	G	4	G	1	G	N	L	H		L
Ace Bloomers Academy Inc	Pasong Kawayan II	345	Private	4	G	0	N	2	G	1	G	1	G	4	G	1	G	N		H		
Airulas Integrated School, Inc.	Pasong Kawayan II	60	Private	0	N	0	N	0	N	1	G	1	G	1	G	0	N	N		H		
Amazing Learners and Molders Learning Center Inc.	Pasong Camachile I	169	Private	1	G	0	N	1	G	1	G	1	G	10	G	0	N	N		H		
Angelicum Immanuel Montessori Of Cavite Inc.	San Francisco	1,449	Private	4	G	1	G	1	G	1	G	1	G	13	G	1	G	N		H		
Bethel Academy	Sta. Clara	2,438	Private	2	G	1	G	1	G	1	G	1	G	10	G	1	G	N	L	H		L
Bernice Learning Center Cavite, Inc.	Biclatan	60	Private	0	N	0	N	0	N	0	N	1	G	1	G	0	N	N		H		
Blessed Academe of Saint Vicente De Paul Inc	San Francisco	100	Private	1	G	0	N	1	G	0	N	1	G	3	G	1	G	N		H		
Blessed Maria Cristina Brando School	Santiago	12,000	Private	4	G	1	G	1	G	1	G	2	G	10	G	1	G	N		H		
Brilliant Heights Scholastic Montesorri Inc.	Santiago	600	Private	1	G	1	G	1	G	1	G	1	G	1	G	1	G	N		H		
Castle of Young Mind Learning School Inc.	San Francisco	144	Private	0	N	0	N	1	G	0	N	1	G	2	G	0	N	N		H		
Centre D'etude De Mahershalalhasbahar Emmanuel, Inc.	Pasong Camachile I	100	Private	0	N	0	N	1	G	0	N	1	G	1	G	0	N	N		H		
Christian Yra Academy	Pasong Camachile II	402	Private	1	G	1	G	1	G	2	G	2	G	11	G	1	G	N		H		
Claremont School of General Trias Cavite, Inc.	Pasong Camachile I	755	Private	2	G	1	G	1	G	1	G	0	N	5	G	1	G	N	L	H	L	M
Colegio De Francesca, Inc	San Francisco	535	Private	1	G	1	G	1	G	1	G	1	G	9	G	1	G	N		H		
Colegio De San Francisco	Sampalucan	2,300	Private	5	G	0	N	1	G	1	G	1	G	14	G	2	G	N	L	H		M

Level/ Name of School	Barangay	Area Occupied (sq.m)	Ownership	Number of Facilities and Condition														Used as Evacuation Center (Y/N)	Hazard Susceptibility (H/M/L)			
				Laboratory		Shop		Library		Canteen		Playground		Comfort Room		Others/ HE			FI	GS	Ln	Lq
				No.	Condition	No.	Condition	No.	Condition	No.	Condition	No.	Condition	No.	Condition	No.	Condition					
Corinthian Academy of Cavite In Gen. Trias, Inc.	1896th	450	Private	1	G	1	G	1	G	1	G	1	G	3	G	1	G	N	L	H		L
Del Rosario Christian Institute of Gen. Trias Inc	Pasong Kawayan II	400	Private	1	G	1	G	1	G	1	G	1	G	7	G	1	G	N		H		
Del Rosario Christian Institute of Gen. Trias	San Francisco	400	Private	1	G	1	G	1	G	1	G	1	G	7	G	1	G	N		H		
Dream Best Academy and Learning Institution Corp.	Bacao II	50	Private	0	N	0	N	0	N	0	N	1	G	1	G	0	N	N	L	H		M
Evangel Christian Educational Center, Inc	Buenavista III	300	Private	2	G	1	G	1	G	1	G	1	G	7	G	1	G	N		H		
Family Life Integrated Montessori School Inc.	Pasong Camachile II	351	Private	1	G	1	G	1	G	1	G	1	G	10	G	2	G	N		H		
Fiat Lux Academe of General Trias	Pasong Camachile I	5,000	Private	5	G	0	N	1	G	1	G	1	G	7	G	1	G	N	L	H		L
Fountain of Wisdom Academy of Gen. Trias Inc	San Francisco	360	Private	1	G	1	G	1	G	1	G	1	G	4	G	1	G	N		H		
Franclouie Learning Center, Inc.	Santiago	265	Private	1	G	1	G	1	G	1	G	1	G	5	G	1	G	N		H		
Fruit of Knowledge Academe Inc.	Pasong Camachile II	1,360	Private	1	G	0	N	1	G	1	G	0	N	4	G	1	G	N		H		
Gateway Integrated School of Science & Tech.	Manggahan	800	Private	2	G	1	G	1	G	1	G	1	G	31	G	1	G	N		H		
Glorious God's Family Christian School, Inc.	Santiago	120	Private	0	N	0	N	1	G	1	G	1	G	4	G	1	G	N		H		
Glory Advance Christian Learning Center	San Francisco	800	Private	0	N	0	N	0	N	1	G	1	G	7	G	0	N	N		H		
Governor's Hills Science School	Biclatan	5,000	Private	4	G	0	N	1	G	1	G	2	G	4	G	1	G	N		H		
Haven of Virtue and Excellence Academy Inc.	Pasong Camachile I	13,280	Private	2	G	2	G	1	G	1	G	0	N	10	G	1	G	N		H		
Haven of Wisdom Academy, Inc.	Pasong Camachile II	600	Private	1	G	0	N	1	G	1	G	1	G	23	G	1	G	N		H		

Level/ Name of School	Barangay	Area Occupied (sq.m)	Ownership	Number of Facilities and Condition														Used as Evacuation Center (Y/N)	Hazard Susceptibility (H/M/L)			
				Laboratory		Shop		Library		Canteen		Playground		Comfort Room		Others/ HE			FI	GS	Ln	Lq
				No.	Condition	No.	Condition	No.	Condition	No.	Condition	No.	Condition	No.	Condition	No.	Condition					
Hillcrest Periwinkle School Gen. Trias Branch Inc	San Juan I	400	Private	1	G	0	N	1	G	1	G	1	G	9	G	1	G	N	L	H		L
John Isabel Learning Center Inc	Pasong Camachile I	760	Private	1	G	0	N	1	G	1	G	1	G	8	G	1	G	N		H		
Jubilee Christian Faith Academy - Gen. Trias, Inc.	Pasong Camachile II	2,000	Private	1	G	1	G	1	G	1	G	1	G	4	G	1	G	N		H		
Kairos Academe Learning Center, Inc.	Pasong Camachile II	80	Private	0	N	0	N	0	N	0	N	1	G	2	G	0	N	N		H		
Kidz Kinder Garden Home Learning Center	Biclatan	120	Private	0	N	0	N	0	N	0	N	1	G	2	G	0	N	N		H		
King Arthur Academy Inc.	Pasong Kawayan II	80	Private	1	G	0	N	1	G	0	N	0	N	3	G	0	N	N		H		
King Solomon Academy of Cavite Inc.	San Juan I	800	Private	1	G	1	G	1	G	1	G	1	G	4	G	1	G	N	L	H		L
La Salette Montessori Multiple Intelligences Learning Center Inc	San Francisco	136	Private	1	G	0	N	1	G	0	N	1	G	4	G	1	G	N		H		
L'nissi Welfare and Learning Development Center Inc	Pasong Camachile II	80	Private	1	G	0	N	1	G	1	G	0	N	6	G	1	G	N		H		
Lois Faith Christian Academy	Manggahan	400	Private	1	G	0	N	1	G	1	G	1	G	4	G	1	G	N		H		
Lyceum De Abuid Inc	Buenavista II	120	Private	1	G	0	N	1	G	1	G	1	G	2	G	1	G	N		H		
Lyceum of The Philippines University	Manggahan	60,000	Private	45	G	1	G	1	G	2	G	0	N	30	G	4	G	N		H		
Miriam Carmeli School	San Francisco	900	Private	1	G	1	G	1	G	1	G	1	G	4	G	1	G	N		H		
Mother Theresa School	San Francisco	1,647	Private	1	G	1	G	1	G	1	G	1	G	24	G	1	G	N		H		
NCST Institute of Industrial Research and Training - General Trias	Bacao II	150	Private	1	G	3	G	1	G	0	N	0	N	2	G	0	N	N	L	H		M
New Buenavista Academy, Inc	Manggahan	1,500	Private	1	G	1	G	1	G	1	G	1	G	20	G	1	G	N		H		
Nineveh Learning Center, Inc	San Francisco	1,800	Private	1	G	1	G	1	G	1	G	1	G	12	G	1	G	N		H		
Our Lady of Remedios Montesorri School	Buenavista II	3,051	Private	3	G	0	N	1	G	2	G	1	G	6	G	1	G	N		H		

Level/ Name of School	Barangay	Area Occupied (sq.m)	Ownership	Number of Facilities and Condition														Used as Evacuation Center (Y/N)	Hazard Susceptibility (H/M/L)			
				Laboratory		Shop		Library		Canteen		Playground		Comfort Room		Others/ HE			FI	GS	Ln	Lq
				No.	Condition	No.	Condition	No.	Condition	No.	Condition	No.	Condition	No.	Condition	No.	Condition					
Our Lady of The Holy Rosary School Educational Foundation General Trias Branch, Inc.	Pasong Kawayan II	4,086	Private	1	G	1	G	1	G	1	G	1	G	7	G	1	G	N		H		
Peter Paul Academy Inc	San Francisco	120	Private	1	G	1	G	1	G	1	G	1	G	3	G	1	G	N		H		
Potter's Hand Academy of Gen. Trias, Inc.	San Francisco	446	Private	1	G	1	G	1	G	1	G	1	G	8	G	1	G	N		H		
Potter's Heart of Wisdom Academy Inc	Navarro	492	Private	1	G	1	G	1	G	1	G	1	G	3	G	1	G	N	L	H		L
Regis Angeli Learning Center	Santiago	500	Private	1	G	0	N	1	G	1	G	1	G	10	G	1	G	N		H		
Saint Charles Borromeo Integrated School	San Francisco	500	Private	1	G	0	N	1	G	1	G	1	G	10	G	1	G	N		H		
Saint Francis School	San Juan I	6,077	Private	2	G	0	N	1	G	1	G	1	G	4	G	1	G	N	L	H		L
Saint Gilbert Myra Academe Inc	Santiago	472	Private	1	G	1	G	2	G	1	G	1	G	4	G	1	G	N		H		
Samuel Christian College of Gen. Trias, Inc	Navarro	4,000	Private	4	G	1	G	1	G	1	G	2	G	4	G	1	G	N	L	H		L
San Gabriel Academy of Cavite	Pasong Camachile II	120	Private	1	G	0	N	1	G	1	G	1	G	7	G	1	G	N		H		
San Francisco De Malabon Parochial School	Bagumbayan	800	Private	1	G	0	N	1	G	1	G	1	G	18	G	1	G	N	L	H		L
Saving Grace Christian School in Gen. Trias Inc.	San Francisco	384	Private	1	G	1	G	1	G	0	N	1	G	4	G	1	G	N		H		
Shepherd's Haven Christian Academy of Cavite (Shcaci), Inc	Pasong Camachile II	193	Private	1	G	0	N	1	G	1	G	1	G	2	G	1	G	N		H		
St. Alloysius Gonzaga Integrated School of Cavite	San Francisco	375	Private	1	G	1	G	1	G	1	G	1	G	7	G	2	G	N		H		
St. Edward Integrated School (Faith Campus)	Navarro	29,568	Private	2	G	0	N	1	G	1	G	1	G	8	G	1	G	N	L	H		L
St. Edward Integrated School (Charity Campus)	Navarro	3,000	Private	2	G	0	N	1	G	1	G	1	G	8	G	1	G	N	L	H		L

Level/ Name of School	Barangay	Area Occupied (sq.m)	Ownership	Number of Facilities and Condition														Used as Evacuation Center (Y/N)	Hazard Susceptibility (H/M/L)			
				Laboratory		Shop		Library		Canteen		Playground		Comfort Room		Others/ HE			FI	GS	Ln	Lq
				No.	Condition	No.	Condition	No.	Condition	No.	Condition	No.	Condition	No.	Condition	No.	Condition					
St. Edward Integrated School (Hope Campus)	Navarro	2,000	Private	2	G	1	G	1	G	1	G	1	G	16	G	1	G	N	L	H		L
Star Blossoms Academy	Santiago	500	Private	2	G	0	N	1	G	1	G	0	N	8	G	1	G	N		H		
Sure Foundation School Inc.	San Francisco	850	Private	1	G	1	G	1	G	1	G	1	G	2	G	1	G	N		H		
Teruah Early Childhood Care Center, Inc.	Pasong Kawayan II	60	Private	0	N	0	N	0	N	1	G	1	G	2	G	0	N	N		H		
The Centennial Academy of The Blessed Trinity Cavite Inc.	Sampalucan	10,000	Private	3	G	1	G	1	G	1	G	1	G	4	G	1	G	N	L	H		M
The Palm Ridge School Gen. Trias Campus	Santiago	6,000	Private	4	G	1	G	1	G	1	G	1	G	12	G	1	G	N		H		
The First Uniting Christian School	Pasong Camachile II	320	Private	1	G	0	N	1	G	1	G	1	G	1	G	1	G	N		H	L	
The True Vine Dynamic School	San Francisco	1,000	Private	1	G	1	G	1	G	1	G	1	G	7	G	1	G	N		H		
Thomas Aquinas School of Gen. Trias Cavite Inc	Pasong Camachile I	780	Private	1	G	1	G	1	G	1	G	1	G	6	G	1	G	N		H		
To Kindle Mind Kiddie School	Pasong Camachile II	180	Private	1	G	0	N	1	G	0	N	1	G	4	G	1	G	N		H		
Villagio Ignatius School	Buenavista I	1,865	Private	1	G	1	G	1	G	1	G	0	N	9	G	1	G	N		H		
Whizzkid Christian Academy Inc	San Francisco	250	Private	0	N	0	N	0	N	0	N	1	G	2	G	0	N	N		H		
Young Ji International School/Colleges	San Francisco	700	Private	4	G	1	G	3	G	1	G	2	G	23	G	1	G	N		H		
Young Minds Learning Center	San Francisco	125	Private	0	N	0	N	0	N	0	N	0	N	2	G	0	N	N		H	L	

Notes: Facilities - Laboratory (La), Shop (S), Library (Li), Canteen (Cn), Comfort Room (CR), Playground (P), Others (O); Other facilities - H.E. Room; Condition - Good/Well Maintained (G), Poor/Needs Improvement (P), Critical/Needs Priority Action (C), None/No such facility (N); Hazard Susceptibility – High (H), Moderate (M), Low (L); Types of hazard – Flood (FI), Ground Shaking (GS), Landslide (Ln), & Liquefaction (Lq)

Source: Department of Education, Division – City of General Trias; Data Gathering (Actual Survey), Office of the City Planning

Similarly, some public high schools also lack the said facility including Luis Ferrer Jr North National High School, Luis Ferrer Jr Senior High School, and Luis Ferrer Jr West National High School.

The facilities offered by each private school vary on the grade and year level they cater to (see Table 1). Majority of the private schools are situated in the populous barangays such as Barangays San Francisco and Pasong Camachile II.

The lack of sufficient educational facilities limits the access to knowledge and may therefore hinder their educational growth. As such, said facilities are essential and must be provided to prevent a gap in the quality of education between public and private schools. Moreover, it is evident that there are schools that are susceptible to low to moderate flooding, liquefaction, landslide, and highly susceptible to ground shaking. And, some schools are used as an evacuation center in times of calamities, thus it is beneficial that LGU provide a high-capacity evacuation center.

Student-Teacher and Student-Classroom Ratios

The number of classrooms and teachers are among the significant factors affecting the standards of education. The ratio of student to classrooms and teachers are presented in Table 2. The standard teacher-student ratio is 1:35 for elementary level and 1:40 for the secondary level.

As shown in the table below, the teacher to student ratio in private elementary and secondary schools are within the standards of the Department of Education. On the contrary, the ratio computed for public elementary are lagging behind the set standard of DepEd for SY 2018 to 2019, nonetheless, the ratio computed for public secondary schools are within the standards.

Moreover, the difference in the classroom ratio between private and public schools is also evident. Based on the data, it is notable that there is a need to increase the number of classrooms in public schools, especially in the secondary level, to facilitate a better learning experience for students. Adequate classroom space and proper class size are needed to have an environment conducive for learning.

Table 2. Teacher-Student and Classroom-Student Ratio by Level, SY 2018-2019

Level	Total Number of Enrolled Students*	Total Number of Teacher	Total Number of Classroom	Teacher to Student Ratio	Classroom to Student Ratio
Private					
Elementary	11,367	530	472	1:21	1:24
Secondary	5,030	448	302	1:11	1:17
Public					
Elementary	40,774	928	670	1:44	1:61
Secondary	22,943	625	235	1:37	1:98

*Note: *Based on the data submitted by DepEd Central Office as of December 2021.*

Source: Basic Education Information System (BEIS) EMISD-Planning Service DepEd Central Office (2021); Actual Survey, Office of the City Planning and Development Coordinator (2018)

Tertiary and Vocational/Technical

Schools (by type and total enrollment)

The City of General Trias has three (3) colleges/universities to cater to the tertiary education programs. These include the Lyceum of the Philippines University – Cavite Campus, Young Ji International School/Colleges, and Cavite State University – General Trias Campus. Among the

three (3), the Lyceum of the Philippines University – Cavite Campus offers the most expansive selection of courses and has the highest number of enrollees. Given the City's close proximity and accessibility to the cities/municipalities in the National Capital Region (NCR), some of the students prefer to enroll in colleges and/or universities located in Metro Manila (see Table 3).

Further, shown in the table the susceptibility of schools to natural hazard. On the other hand, Table 4 presents the number of courses each tertiary school offers.

Table 3. Inventory of Tertiary and Vocational/Technical Schools by Type and Total Enrollment, SY 2017-2018

Name of School	Location (Barangay)	Area (has.)	Ownership	Total Enrollment		Hazard Susceptibility (H/M/L)			
				1 st Sem.	2 nd Sem.	FI	GS	Ln	Lq
Tertiary									
Lyceum of the Philippines University – Cavite Campus	Manggahan	4.93	Private	6,392	6,041		H		
Young Ji International School/ Colleges	San Francisco	0.07	Private	218	218		H	L	
Cavite State University – General Trias Campus	Vibora	0.014	Public	328	379	L	H		L
Total		5.014		6,938	6,638				

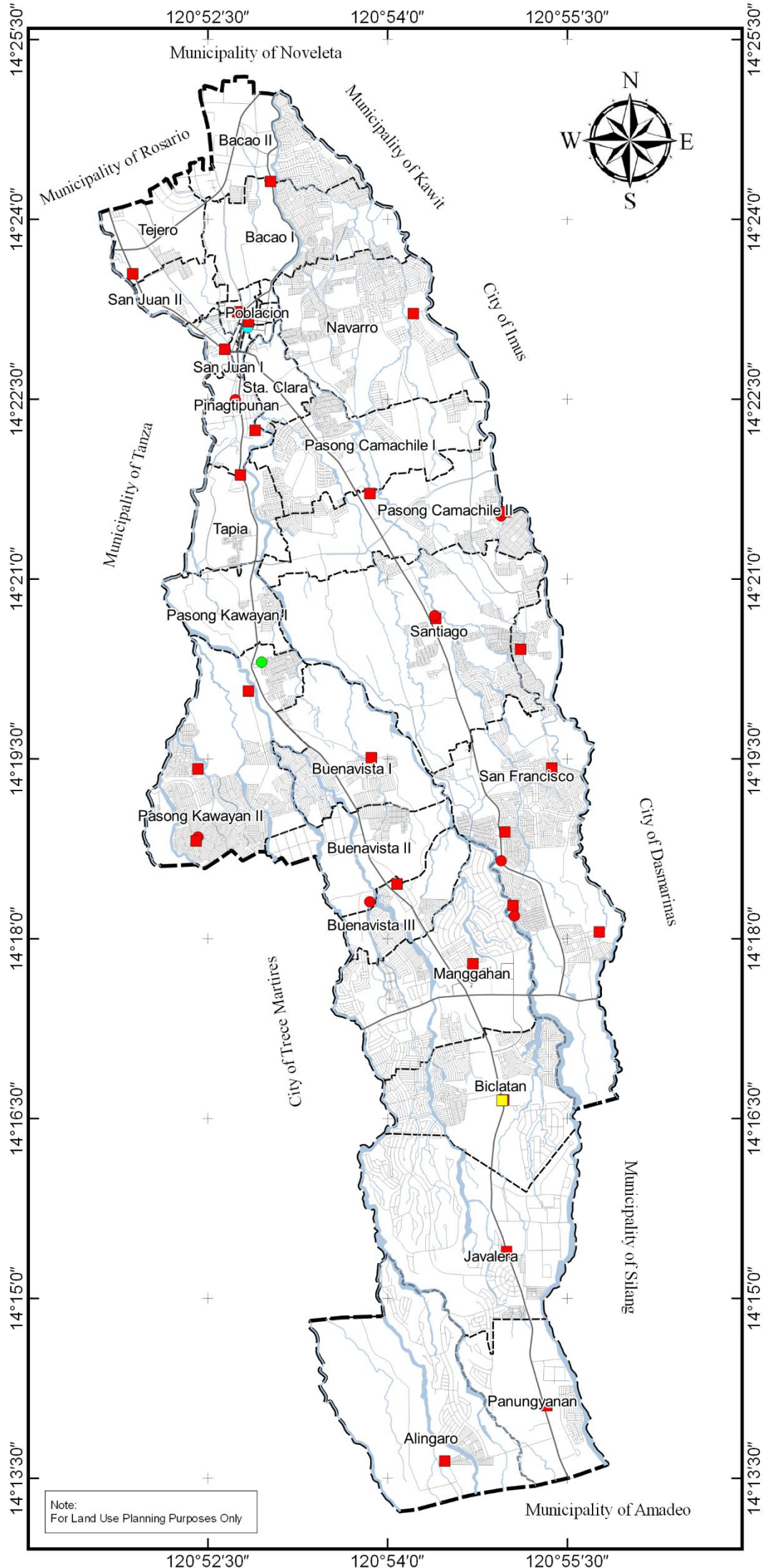
Notes: Hazard Susceptibility – High (H), Moderate (M), Low (L); Types of hazard – Flood (FI), Ground Shaking (GS), Landslide (Ln), & Liquefaction (Lq)

Source: Actual Survey, Office of the City Planning and Development Coordinator

Table 4. Number of Courses Offered by Tertiary Schools, 2018

Course/Degree	Number of Courses Offered by Tertiary School		
	LPU – Cavite Campus	Young Ji International School/ Colleges	CVSU – General Trias Campus
Bachelor of Science	28	4	3
Bachelor of Arts	4	4	
Education Courses	2	1	2
Bachelor of Law	1		
Bachelor of Industrial Technology			1
Diploma in Hotel and Restaurant Management			1

Source: Actual Survey, Office of the City Planning and Development Coordinator

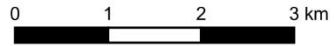


Note:
For Land Use Planning Purposes Only



City of General Trias
Province of Cavite
Region IV-A (CALABARZON)

1:70000



Projection: Transverse Mercator
Geographic Coordinate System: GCS WGS 1984
Datum: D WGS 1984

Public School Facilities Map

Legend:

- City Boundary
- Barangay Boundary
- Rivers / Creeks / Canals
- Road Network

Classification per Education Level

- Elementary
- Elementary, Junior High
- Junior High
- Senior High
- Tertiary

Prepared By:

City Technical Working Group for
Comprehensive Land Use Plan
(2022-2030)

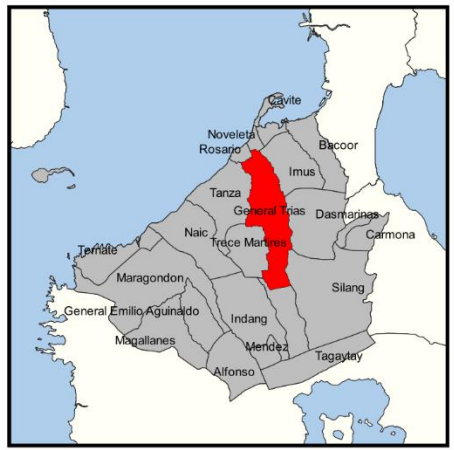


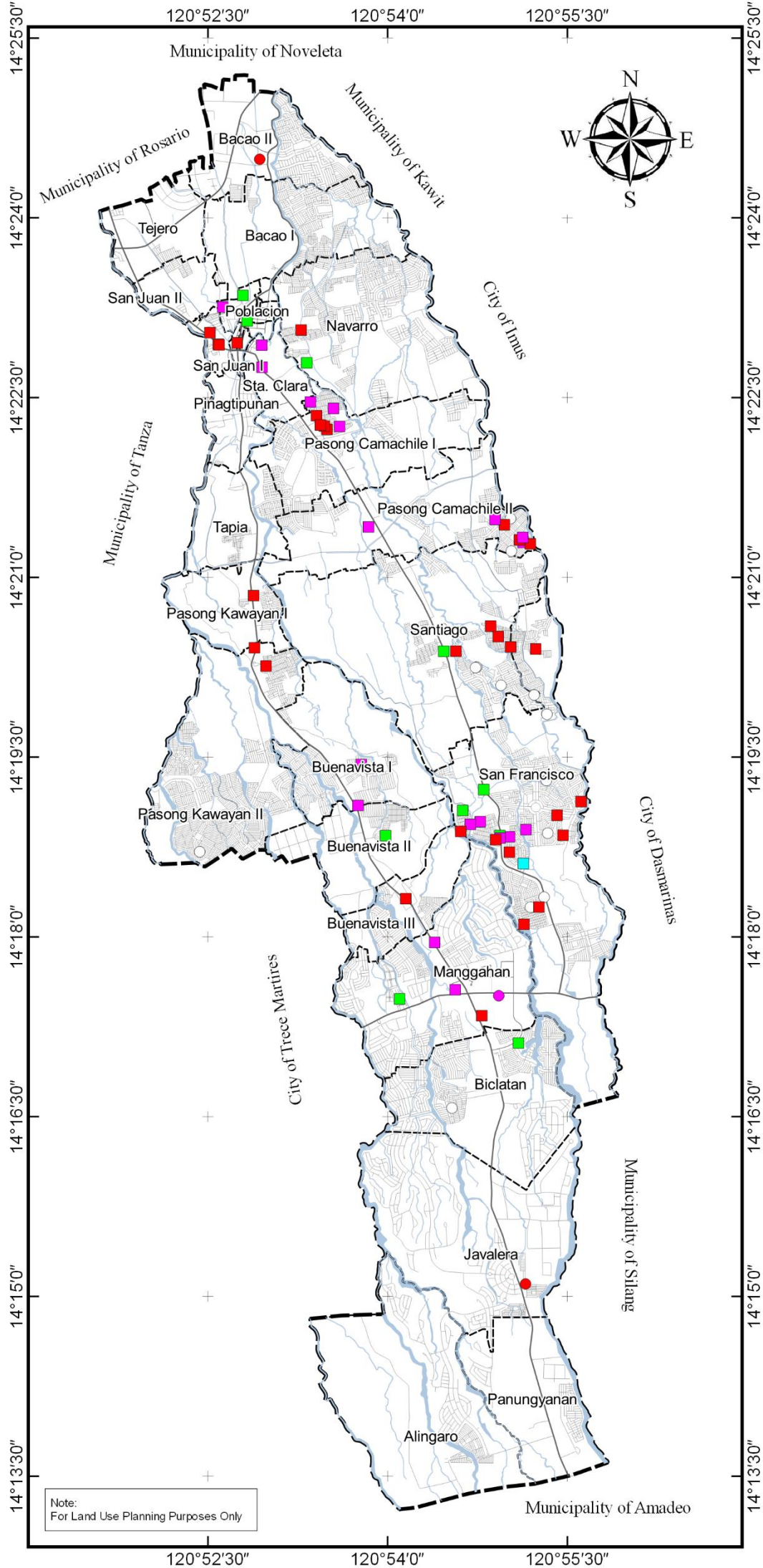
Assisted By:

Department of Human Settlements
and Urban Development
Region IV-A

Sources:

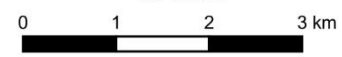
National Mapping and Resource Information
Authority
Google Earth 2021
Office of the City Planning and Development
Coordinator / Zoning Administrator





City of General Trias
Province of Cavite
Region IV-A (CALABARZON)

1:70000



Projection: Transverse Mercator
Geographic Coordinate System: GCS WGS 1984
Datum: D WGS 1984

Private School Facilities Map

Legend:

- City Boundary
- Barangay Boundary
- Rivers / Creeks / Canals
- Road Network

Classification per Education Level

- Elementary
- Elementary, Junior High
- Elementary, Junior High, Senior High
- Elementary, Junior High, Senior High, Tertiary
- Junior High, Senior High, Tertiary
- Vocational School
- No Data

Prepared By:

City Technical Working Group for
Comprehensive Land Use Plan
(2022-2030)

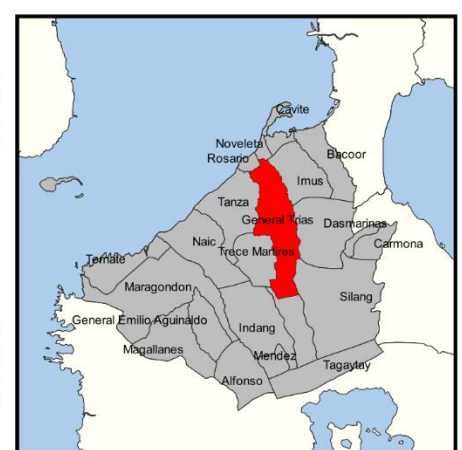


Assisted By:

Department of Human Settlements
and Urban Development
Region IV-A

Sources:

National Mapping and Resource Information
Authority
Google Earth 2021
Office of the City Planning and Development
Coordinator / Zoning Administrator



Historical Enrollment by Level

Majority of the students in the City of General Trias are enrolled in public elementary and secondary schools. As shown in Table 5, there is a steady increase in the number of enrollees for public schools both in the elementary and secondary level from SY 2016-2017 to SY 2020-2021. For private school, from SY 2016-2017 to SY 2018-2019, the number of enrollees is consistently increasing; however, it varies for the next school years as it decreases and increase from SY 2017-2018 to SY 2020-2021. This may be link to the transition-separation period of DepEd General Trias Division to DepEd Cavite, thus records provided by DepEd show a decrease and increase of enrollment in General Trias.

Table 5. Elementary and Secondary Enrollment in Government and Private Schools, SY 2016-2017 to SY 2020-2021

School Year	Elementary			Secondary		
	Public	Private	Total	Public	Private	Total
SY 2016-2017	38,576	7,708	46,284	19,455	8,125	27,580
SY 2017-2018	39,458	11,674	51,132	21,302	10,398	31,700
SY 2018-2019	40,774	11,367	52,141	22,943	5,030	27,973
SY 2019-2020	44,024	5,764	49,788	25,099	10,180	35,279
SY 2020-2021	48,099	5,748	53,847	28,430	8,779	37,209

Source: Basic Education Information System (BEIS) EMISD-Planning Service DepEd Central Office

Moreover, the historical enrollment by level is presented in Table 6. Enrollees for elementary to junior high school are predominantly male for the last 5-years, and in senior high school are females. The increase and decrease of enrollees by level for elementary and secondary for the last 5-years may be attributed to the moving-up/graduation of students, and to the K-12 program being implemented. For the technical/vocational and tertiary level, the number of enrollees for SY 2017-2018 for the three colleges situated in the City still increased for the following school year albeit the cut of number of tertiary schools in the city. It must be noted that due to the proximity of the City to the National Capital Region (NCR), some students seeking for tertiary education may opt to pursue their tertiary education at other schools in NCR.

Table 6. Historical Enrollment by Level for the Last Five (5) School Years, SY 2016-2017 to SY 2020-2021

Level	SY 2016-2017			SY 2017-2018				SY 2018-2019				SY 2019-2020				SY 2020-2021			
	M	F	Total	M	F	Total	Increase/ Decrease (%)	M	F	Total	Increase/ Decrease (%)	M	F	Total	Increase/ Decrease (%)	M	F	Total	Increase/ Decrease (%)
Preparatory	3,349	3,195	6,544	4,018	3,847	7,865	+20.19%	3,640	3,326	6,966	-11.43%	3,615	3,451	7,066	+1.44%	4,512	4,156	8,668	+22.67%
Elementary	20,330	19,410	39,740	22,261	21,006	43,267	+8.88%	23,283	21,892	45,175	+4.41%	21,992	20,730	42,722	-5.43%	23,189	21,990	45,179	+5.75%
Junior HS (Grade 7-10)	11,134	10,759	21,893	12,626	12,102	24,728	+12.95%	11,421	10,959	22,380	-9.50%	14,170	13,386	27,556	+23.13%	15,196	14,230	29,426	+6.79%
Senior HS (Grade 11-12)	2,836	2,851	5,687	3,315	3,657	6,972	+22.60%	2,674	2,919	5,593	-19.78%	3,813	3,910	7,723	+38.08%	3,923	3,860	7,783	+0.78%
Technical/ Vocational																547	548	1,095	
Tertiary				13,576				6,537	7,293	13,830	+1.87%	6,951	7,742	14,693	+6.24%	6,075	7,830	13,905	-5.36%
TOTAL	37,649	36,215	73,864	42,220	40,612	96,408	+30.52%	47,555	46,389	93,944	-2.56%	50,541	49,219	99,760	+6.19%	53,442	52,614	106,056	+6.31%

Source: Basic Education Information System (BEIS) EMISD-Planning Service DepEd Central Office

Historical Enrollment Participation Rate

Enrollment participation rate is the proportion of the school going age population of relevant age level who were enrolled. For SY 2020-2021 the gross EPR was registered at 117.56 and 119.92 percent for elementary and secondary level, respectively. While, net EPR was registered at 112.16% for elementary and 107.67% for secondary. This means that for every 100 children aged 6-11 years, more than 100 children are enrolled and indicates that more have the capacity to go to school now than of the previous years. And for ages 12-18 years, there is a significant increase of enrollees in secondary level showing that more than 100 children continue their studies/ schooling. Table 7 shows the enrollment participation rate of in public and private schools for both elementary and secondary level for the last five (5) school years.

Table 7. Historical Enrollment Participation Rate in Both Public and Private Schools by Level for the Last Five (5) School Years, 2021

School Year	Gross Enrollment Rate		Net Enrollment Rate	
	Elementary	Secondary	Elementary	Secondary
2021-2022	NO AVAILABLE DATA YET			
2020-2021	117.56%	119.92%	112.16%	107.67%
2019-2020	124.05%	97.21%	117.98%	105%
2018-2019	99.01%	96.27%	96.69%	89.39%
2017-2018	97.80%	94.55%	95.84%	87.83%

Note: Data of Gross and Net EPR are "Both for Public and Private Schools (K to G12 only)"

Source: Basic Education Information System, EMISD-Planning Service, DepEd Central Office

Projected Classroom and Teacher Requirements

The projected requirements for classroom and teacher for the elementary and secondary level in public schools for the plan period 2022-2030 are indicated in Table 8. The estimates were computed based on 2010 DepEd target ratio of 35 and 40 students per teacher per classroom for elementary and secondary level, respectively. The city is short of 237 teachers to accommodate the present public schools for elementary level. However, current need of teachers for secondary level results to -51, this negative number implies that the present public-school teachers for secondary level are plentiful. Additionally, the city current needs 495 and 339 classrooms in public schools for elementary and secondary level, respectively.

Projected school enrollment as one of the factors in solving the projected classroom and teacher requirements was derived using the Linear Regression Analysis based on DHSUD Guidelines. As shown the table, the enrollment projections indicate that at the end of the planning period, it will arrive to a total of 115,527 students. A 68,159 students (59.0%) for the elementary and 47,368 students (41.0%) for the secondary level.

Assuming that the current needs for classrooms and teachers per level are already met, a total of 1,452 and 846 public classrooms for elementary and secondary, respectively, are required by 2030. Likewise, 1,710 elementary and 1,236 secondary teachers in public schools are needed at the end of the planning period.

Table 8. Projected Classroom and Teacher Requirement in Public School per Level, 2022-2030

Level	Projected Number of Classroom and Teacher per Planning Period						
	2020	2021	2022	2023	2024	2025	2030
<i>Projected Enrollment</i>	76,529*	79,240	83,776	88,312	92,847	97,383	115,527
Elementary	48,099	49,270	51,631	53,992	56,353	58,715	68,159
Secondary	28,430	29,970	32,145	34,319	36,494	38,669	47,368

Document Source: Comprehensive Land Use Plan, 2022-2030, Volume 3

Level	Projected Number of Classroom and Teacher per Planning Period						
	2020	2021	2022	2023	2024	2025	2030
<i>Classroom</i>	1,251	1,323	1,445	1,567	1,689	1,811	2,298
Elementary	879	913	980	1,048	1,115	1,183	1,452
Secondary	372	411	465	519	574	628	846
<i>Teacher</i>	1,899	1,971	2,093	2,215	2,337	2,459	2,946
Elementary	1,137	1,171	1,238	1,306	1,373	1,441	1,710
Secondary	762	801	855	909	964	1,018	1,236

Notes: *Based on the data submitted by DepEd Central Office as of December 2021; Projection based on DHSUD Guidelines

Source: Basic Education Information System (BEIS) EMISD-Planning Service DepEd Central Office (2021); Office of the City Planning and Development Coordinator

As of 2018, Barangays that do not have public elementary and secondary schools are Barangays Bacao II, Pasong Camachile I, and Sta. Clara. To meet the required number of classrooms by 2030, the proposed location for the school site is in Barangay Pasong Camachile I. The criteria considered for the proposed location for school site are the accessibility, availability, and location that is identified not at risk to natural hazards. Additionally, there are still spaces inside some subdivisions intended for school that are still underdeveloped.

For tertiary level, following the space standard for school site; Lyceum of the Philippines University – Cavite Campus with about 6,000 students per semester and with an area of 4.93 hectares did not meet the space standard, and Cavite State University – General Trias Campus is overly crowded with more than 300 students and less than 200 square meter area.

Moreover, as to the adequacy of classrooms, there should be sufficient number of standard classrooms to accommodate the school enrollment. As well as enough internal spaces for other basic curricular and administrative needs of the school. According to DHSUD Guideline, the standard classroom should provide at least 1.4 sq. meters of space per student. Table 9 presents the space requirement of classroom for both elementary and secondary level, where at the end planning period a total of 11.85 hectares needed to accommodate for a total of 2,298 classrooms.

Table 9. Projected Space Requirement of Classroom per Level, 2022-2030

Level	Projected Space Requirement of Classroom per Level and Planning Period (in square meter)						
	2020	2021	2022	2023	2024	2025	2030
<i>Classroom Area</i>	63,927	67,722	74,072	80,422	86,773	93,123	118,524
Elementary (35 student/classroom)	43,085	44,724	48,030	51,335	54,641	57,947	71,170
Secondary (40 student/classroom)	20,842	22,998	26,042	29,087	32,131	35,176	47,354

Notes: Projection based on DHSUD Guidelines

Source: Office of the City Planning and Development Coordinator